

Lake County School Board

2016-2017 Elementary (Secondary) School Attendance Boundary Map Lake County, Florida

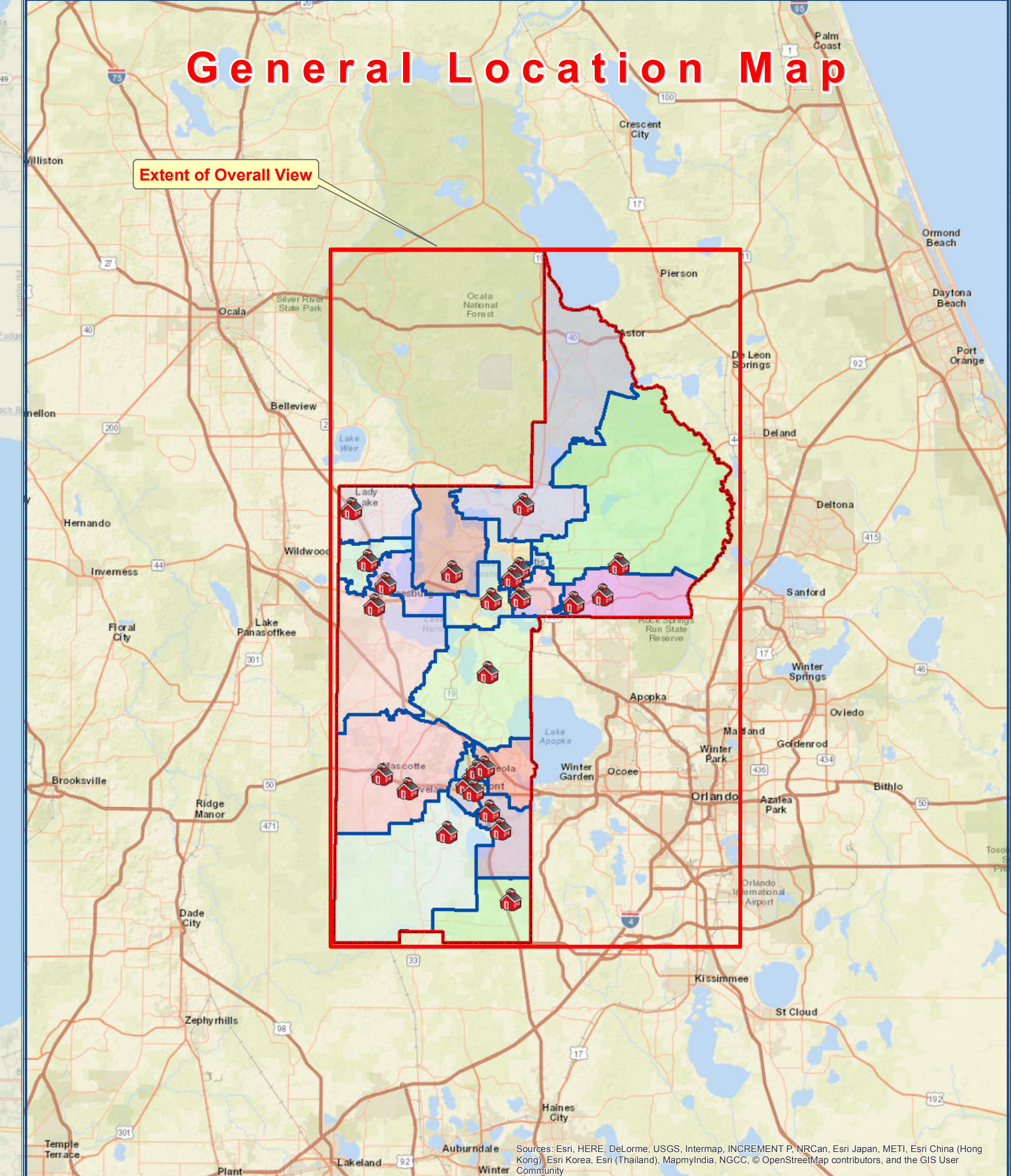
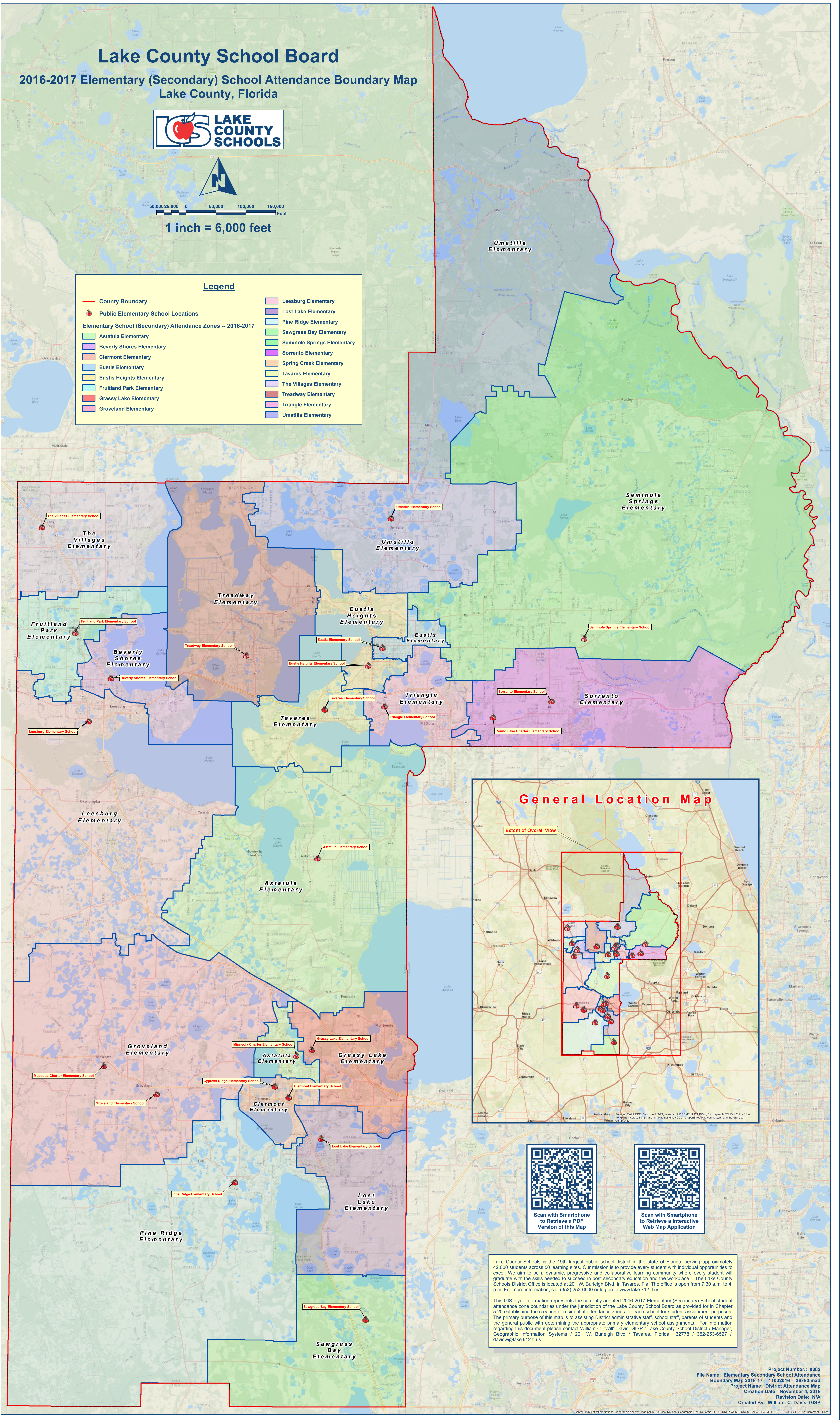


50,000 25,000 0 50,000 100,000 150,000
Feet

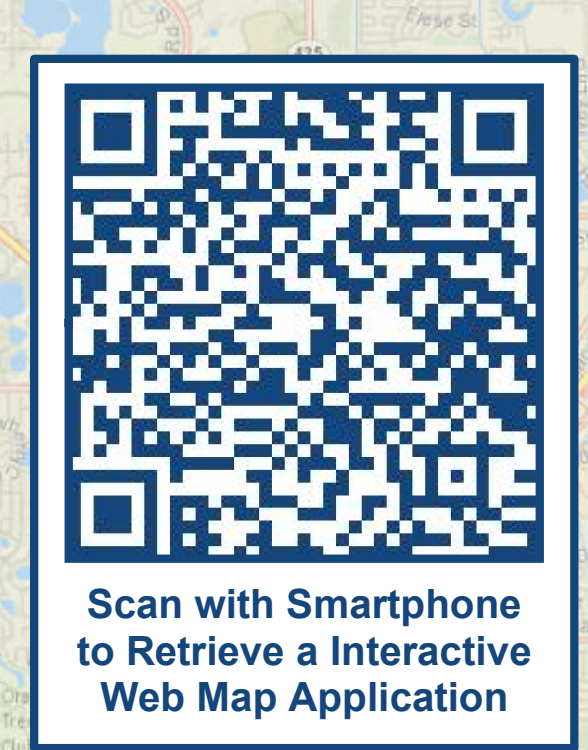
1 inch = 6,000 feet

Legend

- | | |
|--|-------------------------------|
| — County Boundary | Leesburg Elementary |
| 📍 Public Elementary School Locations | Lost Lake Elementary |
| Elementary School (Secondary) Attendance Zones -- 2016-2017 | |
| 🟩 Astatula Elementary | 🟩 Sawgrass Bay Elementary |
| 🟦 Beverly Shores Elementary | 🟩 Seminole Springs Elementary |
| 🟨 Clermont Elementary | 🟪 Sorrento Elementary |
| 🟩 Eustis Elementary | 🟨 Spring Creek Elementary |
| 🟩 Eustis Heights Elementary | 🟨 Tavares Elementary |
| 🟩 Fruitland Park Elementary | 🟩 The Villages Elementary |
| 🟩 Grassy Lake Elementary | 🟩 Treadway Elementary |
| 🟩 Groveland Elementary | 🟩 Triangle Elementary |
| | 🟩 Umatilla Elementary |



Scan with Smartphone to Retrieve a PDF Version of this Map



Scan with Smartphone to Retrieve a Interactive Web Map Application

Lake County Schools is the 19th largest public school district in the state of Florida, serving approximately 42,000 students across 50 learning sites. Our mission is to provide every student with individual opportunities to excel. We aim to be a dynamic, progressive and collaborative learning community where every student will graduate with the skills needed to succeed in post-secondary education and the workplace. The Lake County Schools District Office is located at 201 W. Burleigh Blvd. in Tavares, Fla. The office is open from 7:30 a.m. to 4 p.m. For more information, call (352) 253-6500 or log on to www.lake.k12.fl.us.

This GIS layer information represents the currently adopted 2016-2017 Elementary (Secondary) School student attendance zone boundaries under the jurisdiction of the Lake County School Board as provided for in Chapter 5.20 establishing the creation of residential attendance zones for each school for student assignment purposes. The primary purpose of this map is to assist District administrative staff, school staff, parents of students and the general public with determining the appropriate primary elementary school assignments. For information regarding this document please contact William C. "Will" Davis, GISP / Lake County School District / Manager, Geographic Information Systems / 201 W. Burleigh Blvd / Tavares, Florida 32778 / 352-253-6527 / wdavis@lake.k12.fl.us.

Project Number.: 0082
File Name: Elementary Secondary School Attendance Boundary Map 2016-17 -- 11032016 -- 36x60.mxd
Project Name: District Attendance Map
Creation Date: November 4, 2016
Revision Date: N/A
Created By: William C. Davis, GISP

Content may not reflect National Geographic's current map policy. Sources: National Geographic, Esri, DeLorme, HERE, UNEP-WFP, USGS, NASA, ESA, METI, NRCAN, GEBCO, NOAA, iNaturalist, etc.