

Lake County School Board

2017-2018 Elementary School Student Assignment Boundary Map Lake County, Florida

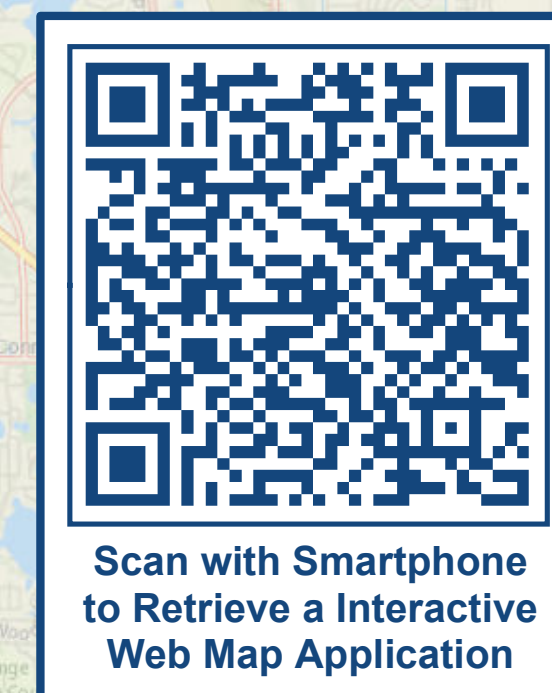
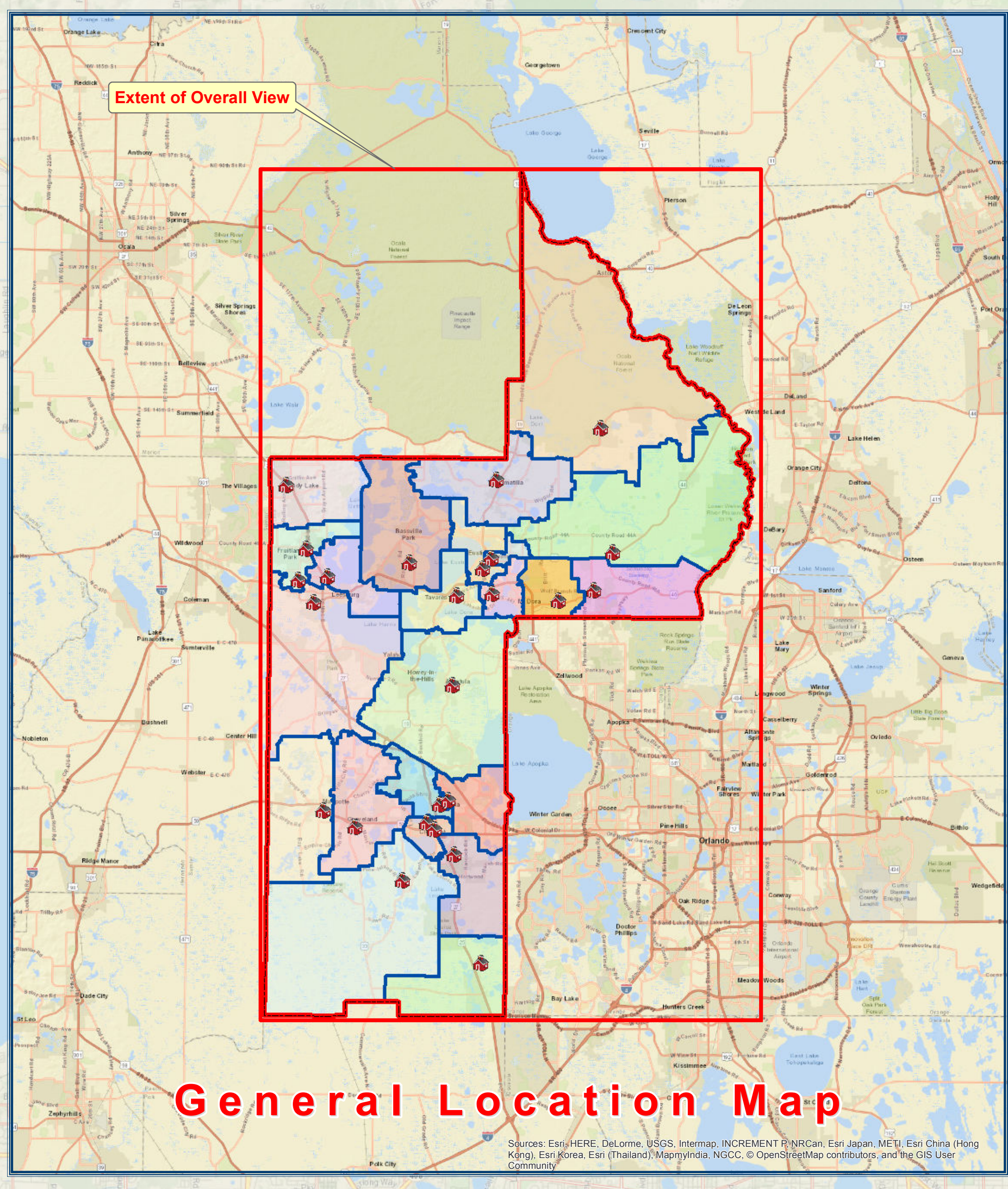
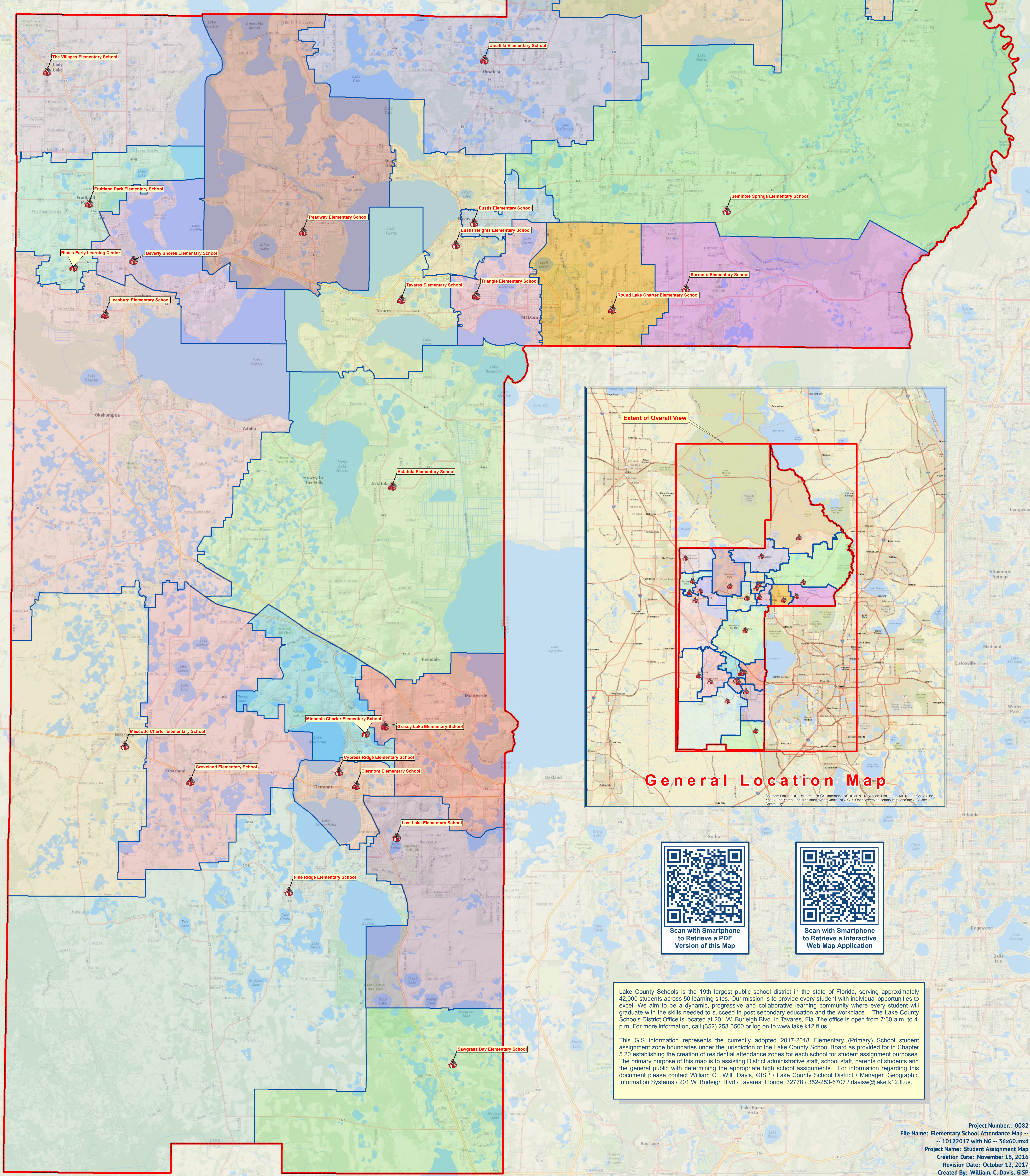


10,000 5,000 0 10,000 20,000 30,000
Feet

1 inch = 6,000 feet

Legend

- | | |
|------------------------------------|-----------------------------|
| County Boundary | Mascotte Elementary |
| Public Elementary School Locations | Minneola Elementary |
| Public Elementary School Locations | Pine Ridge Elementary |
| Elementary School Assignment Zones | Round Lake Elementary |
| Astatula Elementary | Sawgrass Bay Elementary |
| Beverly Shores Elementary | Seminole Springs Elementary |
| Clermont Elementary | Sorrento Elementary |
| Eustis Elementary | Spring Creek Elementary |
| Eustis Heights Elementary | Tavares Elementary |
| Fruitland Park Elementary | The Villages Elementary |
| Grassy Lake Elementary | Treadway Elementary |
| Groveland Elementary | Triangle Elementary |
| Leesburg Elementary | Umatilla Elementary |
| Lost Lake Elementary | |



Lake County Schools is the 19th largest public school district in the state of Florida, serving approximately 42,000 students across 50 learning sites. Our mission is to provide every student with individual opportunities to excel. We aim to be a dynamic, progressive and collaborative learning community where every student will graduate with the skills needed to succeed in post-secondary education and the workplace. The Lake County Schools District Office is located at 201 W. Burleigh Blvd. in Tavares, Fla. The office is open from 7:30 a.m. to 4 p.m. For more information, call (352) 253-6500 or log on to www.lake.k12.fl.us.

This GIS information represents the currently adopted 2017-2018 Elementary (Primary) School student assignment zone boundaries under the jurisdiction of the Lake County School Board as provided for in Chapter 5.20 establishing the creation of residential attendance zones for each school for student assignment purposes. The primary purpose of this map is to assist District administrative staff, school staff, parents of students and the general public with determining the appropriate high school assignments. For information regarding this document please contact William C. "Will" Davis, GISP / Lake County School District / Manager, Geographic Information Systems / 201 W. Burleigh Blvd / Tavares, Florida 32778 / 352-253-6707 / davisw@lake.k12.fl.us.