

Lake County School Board

School Concurrency Map Lake County, Florida

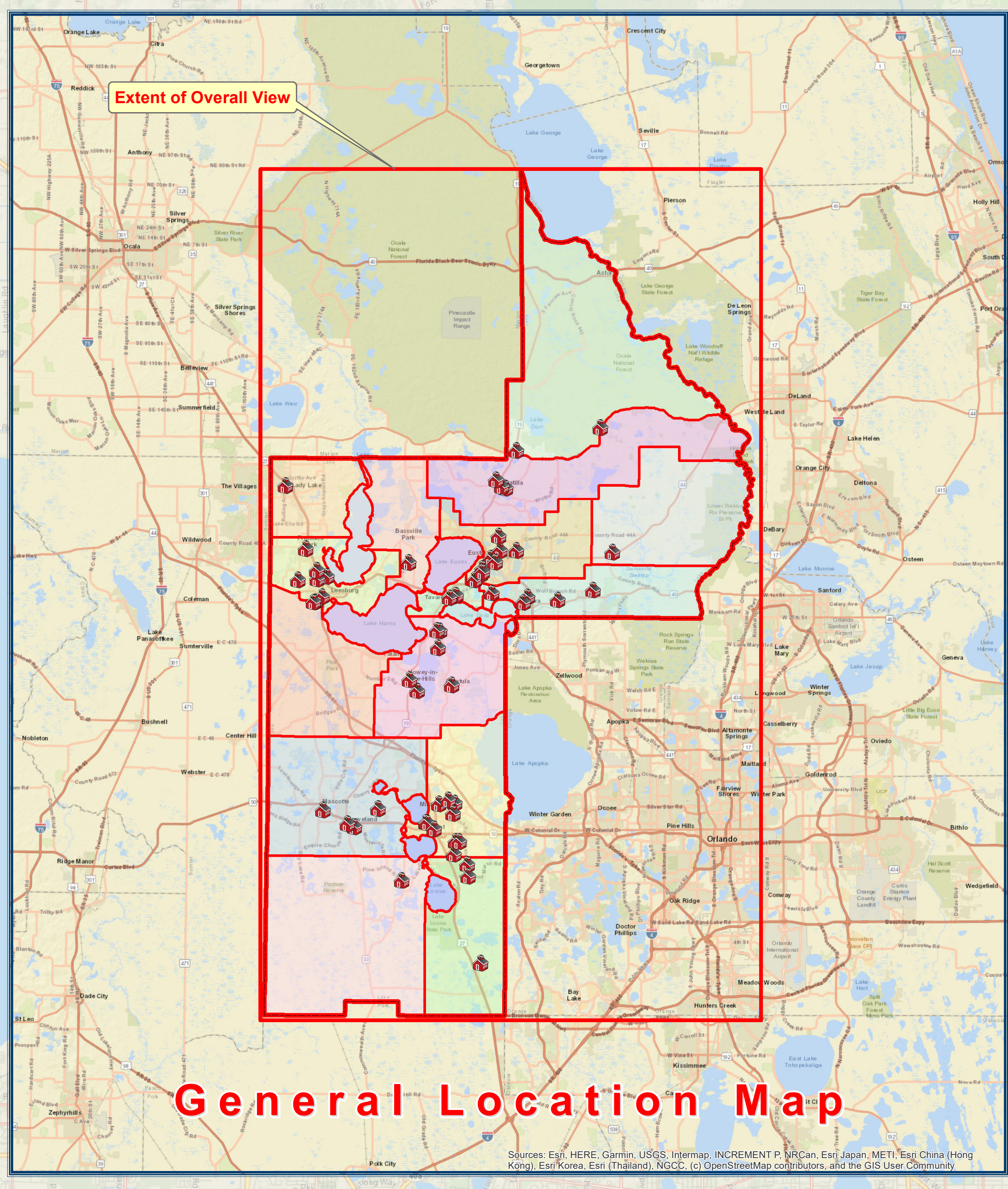
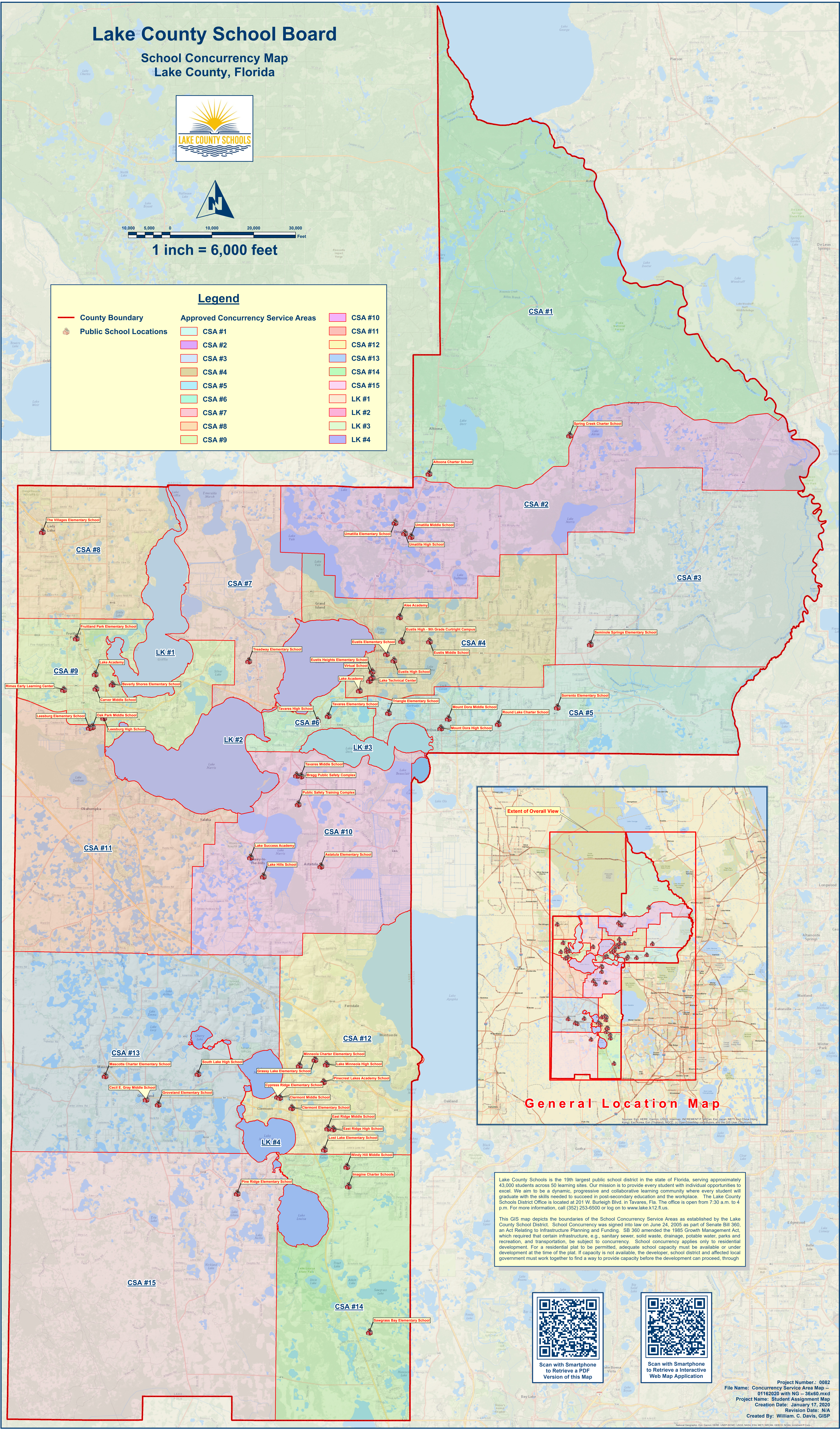


10,000 5,000 0 10,000 20,000 30,000
Foot

1 inch = 6,000 feet

Legend

County Boundary	Approved Concurrency Service Areas	CSA #10
Public School Locations	CSA #1	CSA #11
	CSA #2	CSA #12
	CSA #3	CSA #13
	CSA #4	CSA #14
	CSA #5	CSA #15
	CSA #6	LK #1
	CSA #7	LK #2
	CSA #8	LK #3
	CSA #9	LK #4



Lake County Schools is the 19th largest public school district in the state of Florida, serving approximately 43,000 students across 50 learning sites. Our mission is to provide every student with individual opportunities to excel. We aim to be a dynamic, progressive and collaborative learning community where every student will graduate with the skills needed to succeed in post-secondary education and the workplace. The Lake County Schools District Office is located at 201 W. Burleigh Blvd. in Tavares, Fla. The office is open from 7:30 a.m. to 4 p.m. For more information, call (352) 253-6500 or log on to www.lake.k12.fl.us.

This GIS map depicts the boundaries of the School Concurrency Service Areas as established by the Lake County School District. School Concurrency was signed into law on June 24, 2005 as part of Senate Bill 350, an Act Relating to Infrastructure Planning and Funding. SB 380 amended the 1985 Growth Management Act, which required that certain infrastructure, e.g., sanitary sewer, solid waste, drainage, potable water, parks and recreation, and transportation, be subject to concurrency. School concurrency applies only to residential development. For a residential plat to be permitted, adequate school capacity must be available or under development at the time of the plat. If capacity is not available, the developer, school district and affected local government must work together to find a way to provide capacity before the development can proceed, through



Scan with Smartphone to Retrieve a PDF Version of this Map



Scan with Smartphone to Retrieve an Interactive Web Map Application