

# Lake County School Board

## School Concurrency Map Lake County, Florida

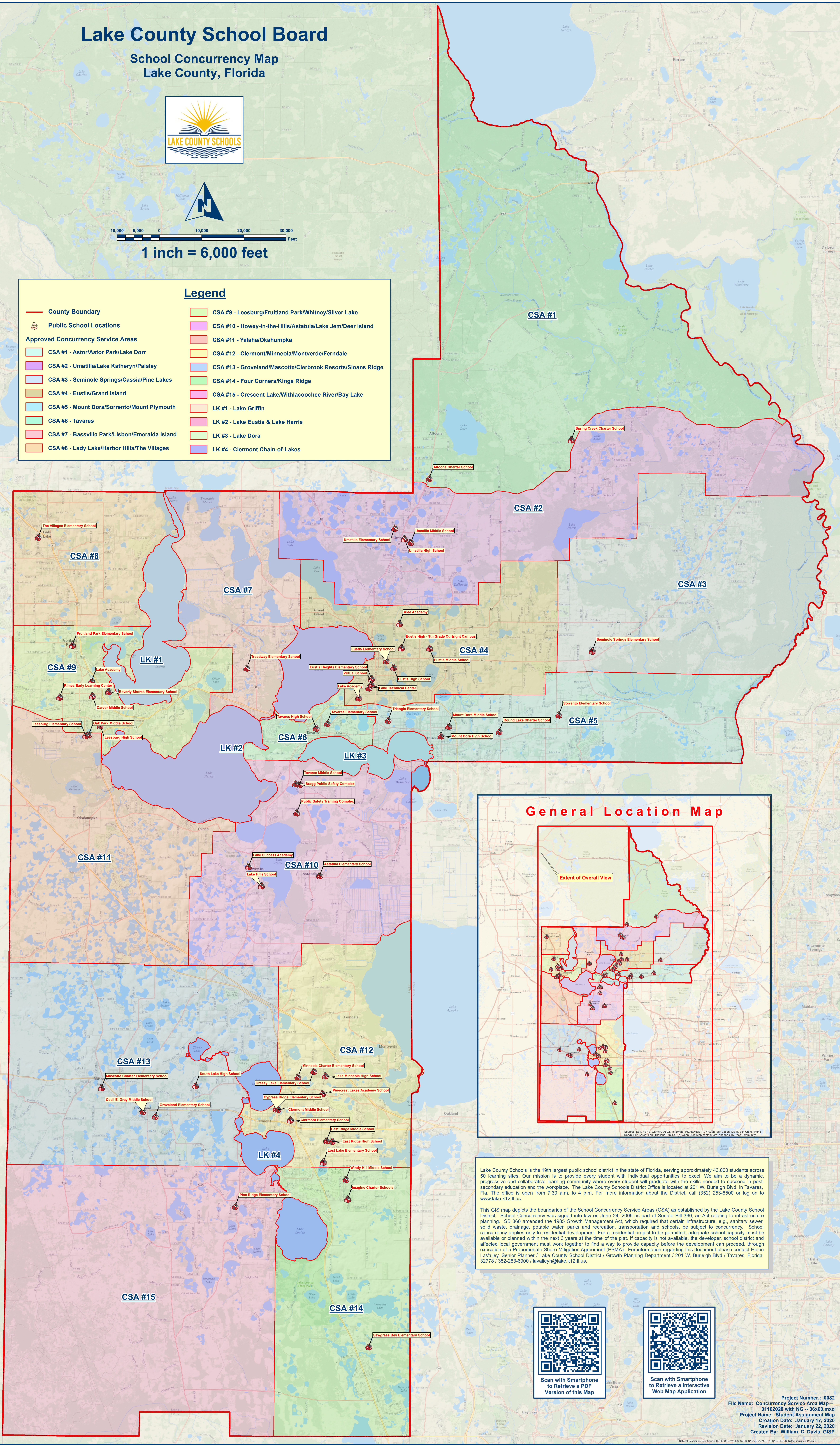


10,000 5,000 0 10,000 20,000 30,000  
Feet

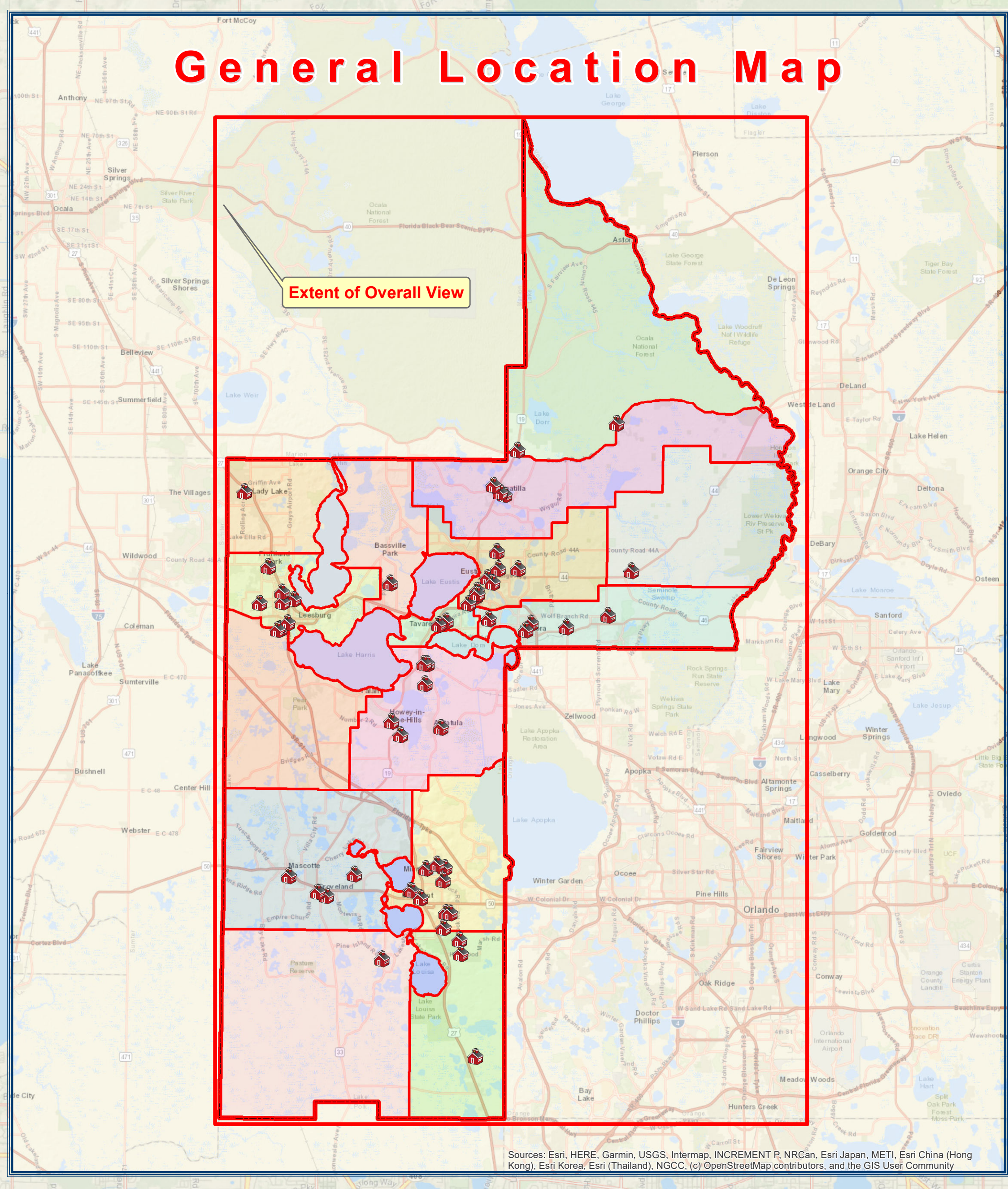
1 inch = 6,000 feet

### Legend

- |                                                |                                                             |
|------------------------------------------------|-------------------------------------------------------------|
| County Boundary                                | CSA #9 - Leesburg/Fruitland Park/Whitney/Silver Lake        |
| Public School Locations                        | CSA #10 - Howey-in-the-Hills/Astatula/Lake Jem/Deer Island  |
| <b>Approved Concurrency Service Areas</b>      | CSA #11 - Yalaha/Okahumpka                                  |
| CSA #1 - Astor/Astor Park/Lake Dorr            | CSA #12 - Clermont/Minneola/Montverde/Ferndale              |
| CSA #2 - Umatilla/Lake Kathryn/Paisley         | CSA #13 - Groveland/Mascotte/Clerbrook Resorts/Sloans Ridge |
| CSA #3 - Seminole Springs/Cassia/Pine Lakes    | CSA #14 - Four Corners/Kings Ridge                          |
| CSA #4 - Eustis/Grand Island                   | CSA #15 - Crescent Lake/Withlacoochee River/Bay Lake        |
| CSA #5 - Mount Dora/Sorrento/Mount Plymouth    | LK #1 - Lake Griffin                                        |
| CSA #6 - Tavares                               | LK #2 - Lake Eustis & Lake Harris                           |
| CSA #7 - Bassville Park/Lisbon/Emeralda Island | LK #3 - Lake Dora                                           |
| CSA #8 - Lady Lake/Harbor Hills/The Villages   | LK #4 - Clermont Chain-of-Lakes                             |



### General Location Map



Lake County Schools is the 19th largest public school district in the state of Florida, serving approximately 43,000 students across 50 learning sites. Our mission is to provide every student with individual opportunities to excel. We aim to be a dynamic, progressive and collaborative learning community where every student will graduate with the skills needed to succeed in post-secondary education and the workplace. The Lake County Schools District Office is located at 201 W. Burleigh Blvd. in Tavares, Fla. The office is open from 7:30 a.m. to 4 p.m. For more information about the District, call (352) 253-6500 or log on to [www.lake.k12.fl.us](http://www.lake.k12.fl.us).

This GIS map depicts the boundaries of the School Concurrency Service Areas (CSA) as established by the Lake County School District. School Concurrency was signed into law on June 24, 2005 as part of Senate Bill 360, an Act relating to infrastructure planning. SB 360 amended the 1985 Growth Management Act, which required that certain infrastructure, e.g., sanitary sewer, solid waste, drainage, potable water, parks and recreation, transportation and schools, be subject to concurrency. School concurrency applies only to residential development. For a residential project to be permitted, adequate school capacity must be available or planned within the next 3 years at the time of the plat. If capacity is not available, the developer, school district and affected local government must work together to find a way to provide capacity before the development can proceed, through execution of a Proportionate Share Mitigation Agreement (PSMA). For information regarding this document please contact Helen LaValley, Senior Planner / Lake County School District / Growth Planning Department / 201 W. Burleigh Blvd / Tavares, Florida 32778 / 352-253-6900 / [lavalleyh@lake.k12.fl.us](mailto:lavalleyh@lake.k12.fl.us).



Scan with Smartphone to Retrieve a PDF Version of this Map



Scan with Smartphone to Retrieve a Interactive Web Map Application